

BULK EARTHWORKS
ROAD CONSTRUCTION
INFRASTRUCTURE
MINING



ABOUT LONEROCK

LONEROCK CONSTRUCTION EMPLOYS MORE THAN 800 PEOPLE AND HAS A FLEET OF OVER 200 UNITS OF PLANT.

Since opening its doors in 1980, Lonerock Construction has grown to be a construction company with an annual turnover of more than R500 million, with between 8 and 12 projects running at any one particular time.

We concentrate on medium to large scale civil-engineering contracts. Our services include bulk earthworks, roads and township services, industrial developments, shopping centres, pipelines and culverts, medium-sized concrete works, and runway construction.



Lonerock Construction currently operates in South Africa and Zambia.

Our vision is to grow and empower our people in order to become a hundred-year construction company.

BULK EARTHWORKS
ROAD CONSTRUCTION
INDUSTRIAL DEVELOPMENTS
SHOPPING CENTRES



OUR SERVICES

SUPPLY
PLANNING
CONSTRUCTION
DEVELOPMENT

PROJECT STRATEGY

Efficient construction starts with good planning. We provide strategic advice to make sure our clients' goals are met, efficiently and cost-effectively.

CLIENT REPRESENTATION

We are involved in many of our projects from the early design stage. This helps us steer the design in a direction that will ensure design quality, value for money, efficiency and ultimate effectiveness.

PROJECT-BRIEF MANAGEMENT

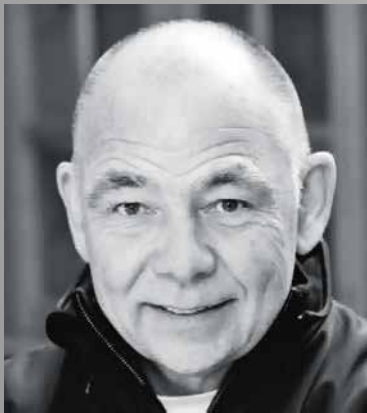
It is important that our clients get exactly what they want. That's why we rigorously manage each brief to ensure our clients' requirements are clearly communicated to the project team, ensuring that there is no difference between client expectations, and ultimately, project delivery.

BUDGET MANAGEMENT

During larger projects, we work closely with our clients' quantity surveyors and planners. This results in budgets being effectively controlled and monitored throughout the project and ensuring that the client is kept fully in the picture and made aware of any potential risks.

THE LEADERSHIP TEAM

THE FACES BEHIND THE **LONEROCK** NAME



JAN VAN DER WALT
Chief Executive Officer



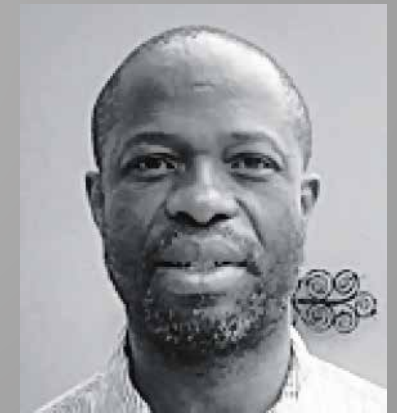
GERHARD VAN SCHALKWYK
Managing Director



LEBO MATUKANE
Director



SAGREE PILLAY
Director



GODFREY MOKABANE
Business Development
Executive



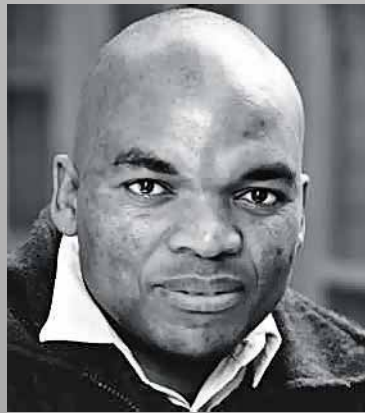
THE FACES BEHIND THE LONEROCK NAME



WICUS NAUDE
Contracts Director



BONITA VISAGIE
Human Resource Manager



JANUARY SEBOTHOMA
Health & Safety Environment
Manager



ROEHANN NIEMAND
Financial Manager



GEORGE MILLS
Administrative Manager

FLAGSHIP PROJECTS

THESE ARE JUST SOME
OF THE PROJECTS THAT
WE HAVE COMPLETED
IN THE PAST DECADE



KYALAMI GRAND PRIX CIRCUIT

Rehabilitation and upgrade
of Kyalami Race Track.
(Including Internal Roads and
Parking)



MAJOR INFRASTRUCTURE

Major infrastructure development
of 13 600 stands in Naturena,
Randfontein, Rooihuiskraal and
Olievenhoutsbosch.



LANSERIA AIRPORT

Construction of a new runway
and various apron extensions at
Lanseria International Airport in
Johannesburg.

ZAMBIA

INTO AFRICA



Lonerock is the co-founder of Lonerock Construction Zambia, a Level 1 NCC registered construction company operating from Lusaka.

Lonerock Zambia is led by CEO Doreen Mwamba, a Zambian Entrepreneur who is the major shareholder. The remaining shares are held by Lonerock South Africa. She is assisted by MD Gerhard van Schalkwyk.

Lonerock Zambia is focused on providing service excellence to private clients, predominantly situated in the Copper Belt, as well as to Government Departments where road construction is the primary focus.

Recently completed projects include the Upgrading of Urban Roads in Matero Township of Lusaka and the execution of Emergency Repairs to Rural Roads in the Eastern Province.



URBAN ROADS UPGRADE LOT 9 MATERO

Layerworks, Ancillary Works and Surfacing of Urban Roads in Matero Township, Lusaka

SKILLS DEVELOPMENT

DEVELOPING OUR PEOPLE



Lonerock Construction wants to be an employer of choice for people in the construction sector. That is why we take people development seriously.

All of our companies, Lonerock Construction, Lonerock Plant, and Lonerock Zambia, are committed to optimising our employees' performance. Through education, training and development, we try to ensure that everyone who works for us develops to their full potential.

Both of our South African companies are registered with the Construction Sector Education and Training Authority.

Our implemented Skills Development Programmes benefit both local communities and societies at large, and a number of learnership opportunities are specifically aimed at unemployed graduates.



EMPOWERMENT

EMPOWERING PEOPLE TO DRIVE PRODUCTIVITY

Lonerock Construction has attained a Level 2 BBEE Contributor status, with a 9 CE CIDB Grading. We comply with more than 75% of the prescriptions in South Africa's Construction Charter.

We are exceeding our target of 27.5% black ownership; currently black ownership of Lonerock stands at 30%, with our workers trust at 10% and individually owned shares at 20%. We also have black female representation of 40% on the company's board and executive management.

In addition, we have set targets of 68% black representation in junior management, 45% in middle and 35% in senior management. All of these targets have been exceeded, with black people forming more than 80% of junior management.

More than 50% of our procurement spend is with BBEE-compliant and black-owned companies. We also spend more than 3% of our annual net profit on the development of black-owned businesses and enterprise development. We spend a further 1% of net profits on social economic development.

HEALTH & SAFETY

MORE THAN
JUST A
BUSINESS
IMPERATIVE



Ensuring that all of our employees do their jobs with full consideration for occupational health and safety, is not just important to the health of our business, it is also the right thing to do.

Our employees receive constant mentorship and guidance. Our safety policy, which is reviewed and revised in conjunction with our employees, is meant to motivate, educate and train them at all levels within the organisation. We have also

established a number of safety forums and programmes to cement our safety culture. Comprehensive HIV/Aids and health programmes have been implemented in order to improve our employees' wellbeing.

At Lonerock we believe in the limitless power of human potential, which is why we do our best to encourage and preserve it.



ENVIRONMENTAL

IN HARMONY WITH
THE ENVIRONMENT

INTELLIGENT ADVICE AND SOLUTIONS ...

At Lonerock we have taken decisive action to reduce our impact on climate change and the environment. We have provided all of our people with adequate resources to execute all projects in harmony with the environment.

We are mindful of the impact of construction activities on the environment, especially through the burning of fossil fuels. That is why we carefully review each project's environmental

impact and resultant environmental management plan before implementation.

Employees are sensitised to global warming, energy saving and waste management through regular safety meetings.

Environmental rehabilitation is linked to all of our project programmes, ensuring we minimise our impact on the planet.

CNR ROCKY RIDGE ROAD &
BEYERS NAUDÉ DRIVE
MULDERSDRIFT
SOUTH AFRICA

Tel: +27 11 540 2300

Fax: +27 11 540 2400

Email: admin@lonerock.co.za

4132 MWINILUNGA ROAD
SUNNINGDALE
LUSAKA
ZAMBIA

Tel: +260 955 843 421

Tel: +27 82 827 8525

Email: doreen@lonerock.co.za

